

The Girl From Ipanema

garota de ipanema

ANTONIO CARLOS JOBIM

D6⁹

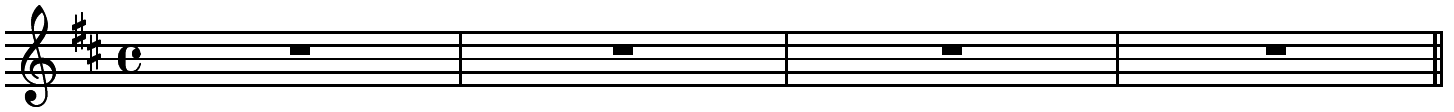
A-

A-6

D6⁹

A-

A-6

DΔ⁹E₁₃

Tall and tan and young and love-ly the girl from I - pa - ne - ma goes walk-ing and when
When she walks she's like a Sam-ba that swings so cool and sways so gen-tle, that when

E-

E^b_{7b5}

DΔ

E^b₇

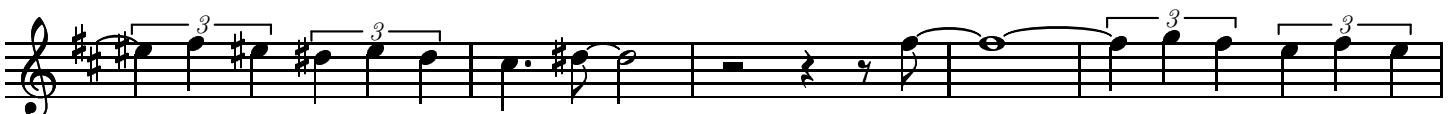
DΔ



she pass - es, each one she pass - es goes Aaaah!
she pass - es, each one she pass - es goes Aaaah!

E^b_ΔA^b₉D[#]₋₉

Oh, but I watch her so sad - ly. How

B₉E-₉

can I tell her I love her? Yes, I would give my heart

C₉F[#]₋B₇^{b9}_{#11}

E-



glad - ly. But each day when she walks to the sea, she looks straight a-head not at

A7^{b9}_{#11}D Δ ⁹E₁₃

me Tall and tan and young and love - ly the girl from I - pa - ne

E-₉E^b_{7b5}D Δ E^b_{7b5}

- ma goes walk - ing and when she pass - es I smile, but she does - n't see

D Δ E^b_{7b5}D Δ E^b_{7b5}D Δ E^b_{7b5}D Δ 