

# ONE MORE CHANCE

Words and Music by  
MADONNA CICCONE and  
DAVID FOSTER

Moderately ♩ = 92

\* Cmaj7 Bm7 Am7 Bm7 Cmaj7 Bm7 Am7  
 N.C. Bbmaj7 Am7 Gm7 Am7 N.C. Bbmaj7 Am7 Gm7

*p*

(with pedal)

Detailed description: This block contains the piano introduction for the song. It features a grand staff with treble and bass clefs. The music is in 4/4 time and begins with a piano (*p*) dynamic. The introduction consists of several measures of chords and moving lines in both hands. Above the staff, guitar chord diagrams are provided for each measure, including N.C. (Natural Chord), Cmaj7, Bm7, Am7, Bbmaj7, and Gm7. A note '(with pedal)' is placed below the bass line to indicate the use of the sustain pedal.

Bm7 Am7 Bb6 Ab6 Am7 Gm7 G F

Detailed description: This block shows the piano accompaniment for the first part of the verse. It continues with the grand staff notation. Above the staff, guitar chord diagrams are provided for each measure, including Bm7, Am7, Bb6, Ab6, Am7, Gm7, G, and F. The piano part features a steady bass line and a more active treble line with some melodic flourishes.

Verse:

G(9) F(9) G/B F/A C(9) Bb(9)

1. I turned a - round too late\_\_ to see the fall - en star,\_\_  
 2. I like to play the queen of hearts, - I nev - er thought I'd lose, -

Detailed description: This block contains the vocal melody and piano accompaniment for the verse. The vocal line is written on a single staff with lyrics underneath. The piano accompaniment is on a grand staff. Above the vocal staff, guitar chord diagrams are provided for each measure, including G(9), F(9), G/B, F/A, C(9), and Bb(9). The piano part provides harmonic support for the vocal line.

\*Tune Guitar D G C F A D

G(9)  
  
 F(9)

Gmaj7/B  
  
 Fmaj7/A

I fell a - sleep and nev - er saw\_\_ the sun\_\_  
 I rolled the dice but nev - er showed\_ my hand.\_

C(9)  
  
 Bb(9)

D  
  
 C

Em  
  
 Dm

go down.\_\_\_\_\_ I took your love for grant -  
 I planned it out\_\_ so per -

*mp*

Am7  
  
 Gm7

B7/D#  
  
 A7/C#

Em  
  
 Dm

- ed but luck was al - ways on\_\_ my side,\_  
 - fect - ly\_ so you nev - er leave\_ a girl\_\_ like me.\_

Am7



Am7/D



Bb6



Am7



G



Gm7

Gm7/C

Ab6

Gm7

F



I turned a - round too late and you were gone. So give me  
I was a fool but now I un - der - stand.



Chorus:

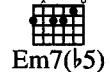
Cmaj7



C



F#m7(b5)



B7



Em



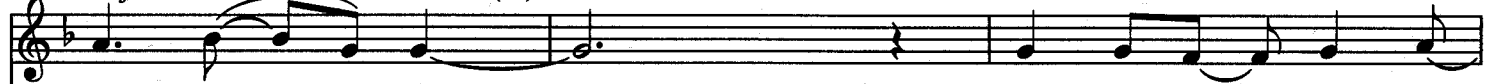
Bbmaj7

Bb

Em7(b5)

A7

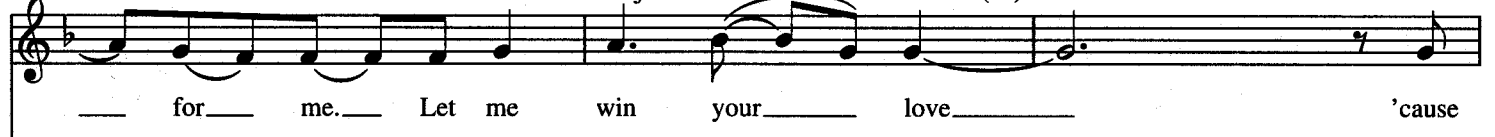
Dm



one more chance, dar - lin', if you care



for me. Let me win your love 'cause



To Coda ⊕

Em



Am7



you {were  
are} al - ways there for me if you care for me, be



1. B7  
A7

2. B7  
A7

there for me. \_\_\_\_\_ there for me. \_\_\_\_\_

*Bridge:*

G6 F6 A/B G/A E D G6 F6 A/B G/A

Here is the law of the land: \_\_\_\_\_ You play with fi - re and you'll\_

E D G6 F6 A/B G/A E D

\_\_\_\_\_ get burned... Here is the les - son I've learned: \_\_\_\_\_ That you

G6 F6 A G Amaj7 Gmaj7 A/B G/A

don't know what you've got \_\_\_\_\_ 'til it's gone. \_\_\_\_\_ So give me

*D.S. al Coda* *N.C.*

♩ Coda

Cmaj7      C      F#m7(b5)      B7  
 Bbmaj7      Bb      Em7(b5)      A7

— for me. — Give me one more chance, —

Em      Cmaj7      C      F#m7(b5)      B7  
 Dm      Bbmaj7      Bb      Em7(b5)      A7

tell me that it's not too late. — Let me win your love, —

Em      Am7  
 Dm      Gm7

dar - lin', please don't hes - i - tate. — If you care for me, — be

B7      G6      A/B      E  
 A7      F6      G/A      D

there for me, — give me one more chance. —

*rit.*      *rit.*